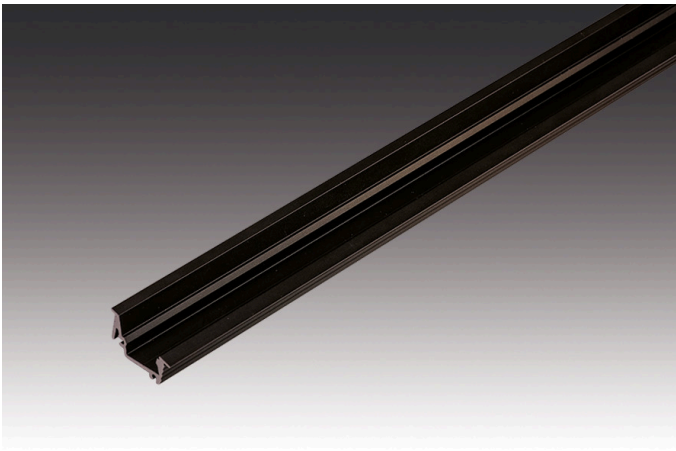


Milled profile I 24 mm

Reverse asymmetrical aluminium LED Milled Profile I 24mm 1m

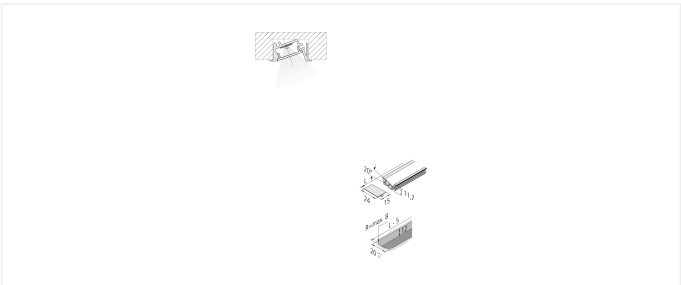


**Description:**  
LED milled profile I (reverse asymmetrical) 24 mm for integration of all Tape versions, assembly in 20 mm wide and 12 mm deep groove, optional accessory: front cover for covering the lateral milling radii and cover profile 15 mm

**EAN-No.:** 4051268178389

**Weight:** 0,19 kg

- Special features:**
- milled profile for reverse asymmetrical illumination



**Order number:**  
61500033213

limited availability

available versions

Choose from the options below. The currently selected one is highlighted in color.

| article number | description                              | colour of housing  |
|----------------|--|--------------------|
| 61500033213    | LED Milled Profile I 24mm 1m             | black              |
| 61500033263    | LED Milled Profile I 24mm 2,95m set of 5 | black              |
| 61500031063    | Front cover LED Milled Profile I 24mm    | black              |
| 61500033210    | LED Milled Profile I 24mm 1m             | anodized aluminium |
| 61500033261    | LED Milled Profile I 24mm 2,95m set of 5 | anodized aluminium |
| 61500031061    | Front cover LED Milled Profile I 24mm    | anodized aluminium |
| 61500033218    | LED Milled Profile I 24mm 1m             | stainless steel    |
| 61500033268    | LED Milled Profile I 24mm 2,95m set of 5 | stainless steel    |
| 61500031068    | Front cover LED Milled Profile I 24mm    | stainless steel    |

