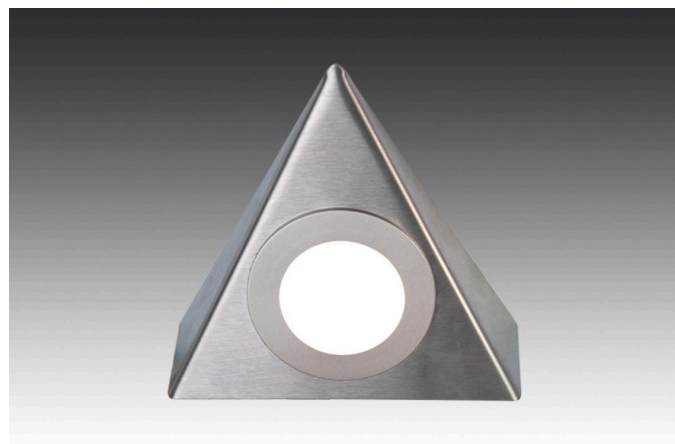


## UL 2-LED F



Stainless steel triangular luminaire with homogeneous planar light UL 2-LED F 3W ww stainless steel



### Description:

LED under cabinet luminaire with homogeneous planar light, housing stainless steel, supply cable 2,5 m with LED 24 plug, colour appearance ww (warm white) approx. 3000K, optional accessories: dim controller with remote control, 1-10V, DALI or WiFi to switch and dim

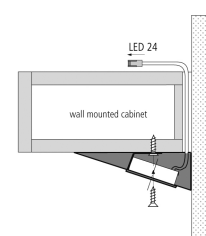
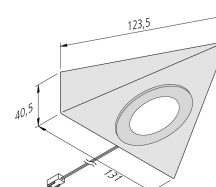
**Connection:** LED-Trafo DC 24 V  
**Life:** L70/B10 >= 50.000 h  
**Light colour:** 3000 K warm white  
**Beam angle:** 110°  
**Energy efficiency:** LED: 113 lm/W; luminaire: 210 lm (70 lm/W)  
**Energy efficiency class:** G  
**Colour rendering:** Ra/CRI >= 93  
**Symbols:** CE, MM, IP20, SK III  
**EAN-No.:** 4051268130790  
**Weight:** 0,175 kg

### Special features:

- housing of brushed stainless steel
- electronic contact switch EBS 4 as accessory
- no visible luminous spots

### UL 2-LED F

	110°	Ø	ww	nw
0,5m		620	320 lx	340 lx
1,0m		1240	80 lx	85 lx
1,5m		1860	36 lx	38 lx
2,0m		2480	20 lx	21 lx
2,5m		3100	13 lx	14 lx



**Order number:**  
61001461002

article in stock

## available versions

Choose from the options below. The currently selected one is highlighted in color.

article number	description	light colour
61001461002	UL 2-LED F 3W ww stainless steel	3000 K warm white
61001461003	UL 2-LED F 3W nw stainless steel	4000 K neutral white
61055931102	set of 3 UL 2-LED F 3W ww stainless steel	3000 K warm white
61055931103	set of 3 UL 2-LED F 3W nw stainless steel	4000 K neutral white
61055931202	set of 3 UL 2-LED F 3W ww stainless steel with switch EBS	3000 K warm white
61055931203	set of 3 UL 2-LED F 3W nw stainless steel with switch EBS	4000 K neutral white

