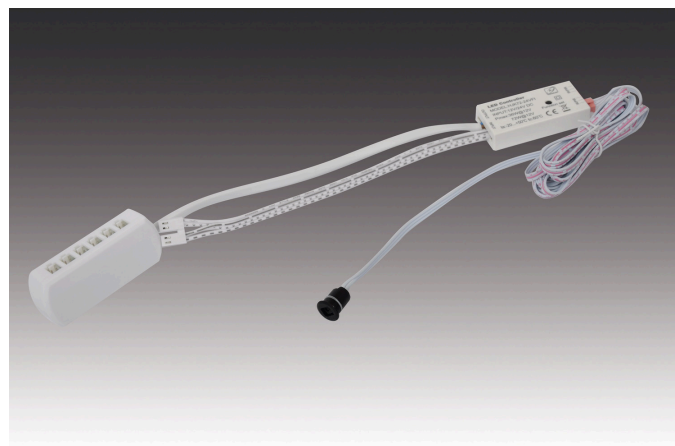


## IR-Switch / Dimmer 10mm



Contactless furniture installation switch IR-Switch / Dimmer 10mm 72W with 1 x sensor



### Description:

Motion activated IR switch for connecting LED lights with 24 V, supply cable 0,2 m with LED 24 plug, sensor cable 0,2 m with 12-way distributor, sensor cable 2m, for assembly in 10 mm cavity, at the switch you can choose between the following two functions: function 1 (as supplied): the first time the switch detects motion it turns the light on, and the second time it turns it off again, function 2: opening the door automatically switches on the light – and closing the door the light switches off, with 2 sensors, the light switches on as soon as a door is opened.

**Symbols:** CE, MM, IP20, SK III

**EAN-No.:** 4051268248549

**Weight:** 0,074 kg

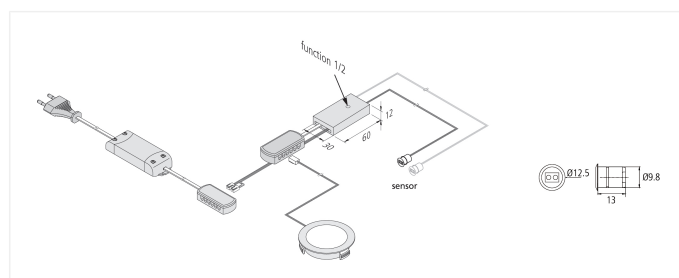
### Special features:

- Connection to LED transformer DC 24 V
- motion operates switch or motion of door operates switch
- function 1 (as supplied): the first time the switch senses motion it turns on the light, and the second time it turns it off again
- function 2 (short keystroke, see drawing): opening the door automatically switches the light on – and closing the door switches it off again (with 2 sensors, the light switches on as soon as a door is opened)
- the brightness which is adjusted in function 1 will be retained after changing into function 2
- the connected LED luminaire is dimmable if the human hand or an object remains inside the detection range of the IR sensor (only in function 1)
- suitable for switching LED luminaires 24 V
- for 10 mm drill holes
- distance between the closed door and IR sensor should be up to 50 mm (depending on surface)
- with memory function (after disconnection from the mains, the previous dimming state is restored)

### Drilling hole



10mm



**Order number:**  
21703220601

article in stock

## available versions

Choose from the options below. The currently selected one is highlighted in color.

article number	description
21703220601	IR-Switch / Dimmer 10mm 72W with 1 x sensor
21703220701	IR-Switch / Dimmer 10mm 72W with 2 x sensor

