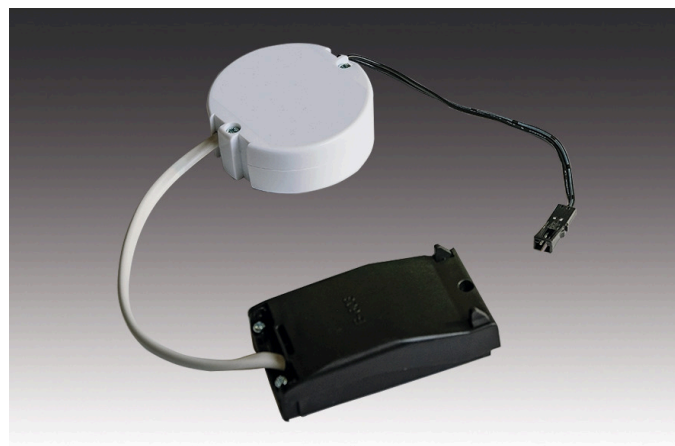


LED 350 accessories (Radio/Dim)



Dimmable Transformer LED 350/ 9W dim with one socket



Description:

dimmable safety transformer for LED luminaire 350 mA, mains cable 2m with Euro plug, with 5-way distributor, max. permissible cable: 5 m, dim range 10-100%

Connection: 220 - 240V / 50 - 60Hz

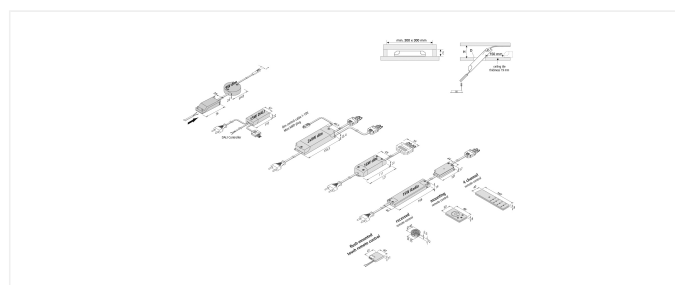
Symbols: CE, MM, IP20, SK II

EAN-No.: 4051268198592

Weight: 0,24 kg

Special features:

- constant 350 mA / max. 59 V DC
- protected against short circuit, overload and no-load
- max. permissible cable: 5 m each
- dim range: 10 – 100 %
- dim range: 2 – 100 % (radio)
- 4-channel remote control with master button and wall mounting also combinable with 24 V and Dynamic controllers



Order number:
20604001512

limited availability

available versions

Choose from the options below. The currently selected one is highlighted in color.

article number	description
61500301705	Transformer LED 350/15W DALI with 3-way distributor
61500301706	Transformer LED 350/15W radio with 3-way distributor
61500301701	Transformer LED 350/15W radio with 3-way distributor
61500301702	Transformer LED 350/15W radio with 3-way distributor
61500301703	Transformer LED 350/15W radio with 3-way distributor
61500301704	Transformer LED 350/15W radio with 3-way distributor
20604001512	Transformer LED 350/ 9W dim with one socket
61500300950	Transformer LED 350/16W dim 5-way distributor + 4 short circuit plugs
61500300928	Transformer LED 350/2x9W dim 2x 3-way distributor (1-10V)
61500300929	Transformer LED 350/2x9W dim 2 x 9-way distributor (1-10V)

