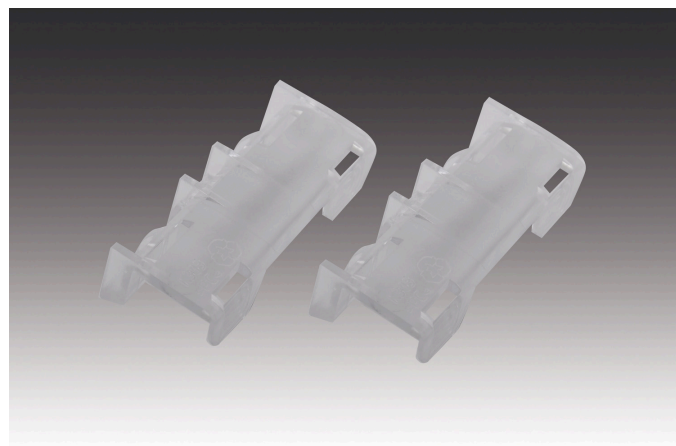
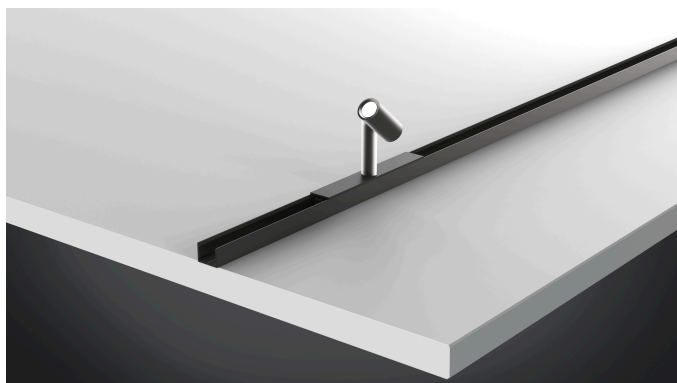


## Mounting Profile

plastic Mounting clip LED Mounting Profile 15/8mm transparent for recessed grip profile L-form



### Description:

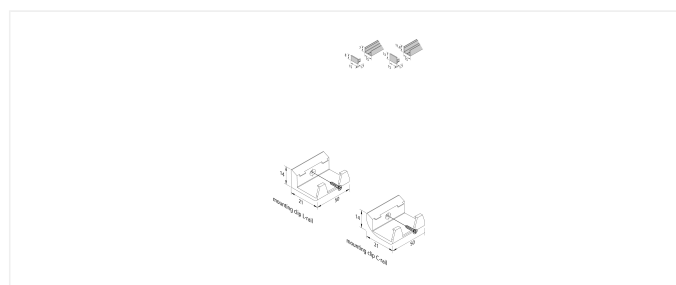
set of 2 mounting clips mounting profile 15/8mm transparent with fixing screws for quick and easy installation in standard L-tracks for recessed grip profiles

**EAN-No.:** 4051268249003

**Weight:** 0,011 kg

### Special features:

- for screwing, gluing or with magnetic tape



**Order number:**  
20204012201

article in stock

## available versions

Choose from the options below. The currently selected one is highlighted in color.

article number	description	colour of housing
61500032113	LED Mounting Profile 15/8mm 1m	black
61500032163	LED Mounting Profile 15/8mm 2,95m set of 5	black
61500031043	Front cover LED Mounting Profile 15/8mm	black
61500032110	LED Mounting Profile 15/8mm 1m	anodized aluminium
61500032161	LED Mounting Profile 15/8mm 2,95m set of 5	anodized aluminium
61500031041	Front cover LED Mounting Profile 15/8mm	anodized aluminium
61500031613	LED Mounting Profile 15/13mm 1m	black
61500031663	LED Mounting Profile 15/13mm 2,95m set of 5	black
61500031023	Front cover LED Mounting Profile 15/13mm	black
61500031610	LED Mounting Profile 15/13mm 1m	anodized aluminium
61500031661	LED Mounting Profile 15/13mm 2,95m set of 5	anodized aluminium
61500031021	Front cover LED Mounting Profile 15/13mm	anodized aluminium
20204011701	Mounting clip LED Mounting Profile 15/13mm transparent	-
<b>20204012201</b>	<b>Mounting clip LED Mounting Profile 15/8mm transparent for recessed grip profile L-form</b>	-
20204012301	Mounting clip LED Mounting Profile 15/8mm transparent for recessed grip profile C-form	-
20204012401	Mounting clip mounting profile 15/8mm metal	-
21304130103	Inside corner mounting profile 15/8mm black	-
21304130101	Inside corner mounting profile 15/8mm anodized aluminium	-
21304130003	Outside corner mounting profile 15/8mm black	-
21304130001	Outside corner mounting profile 15/8mm anodized aluminium	-

