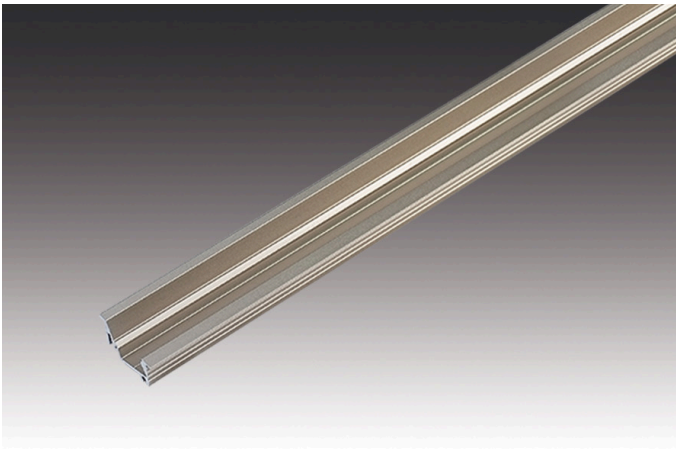
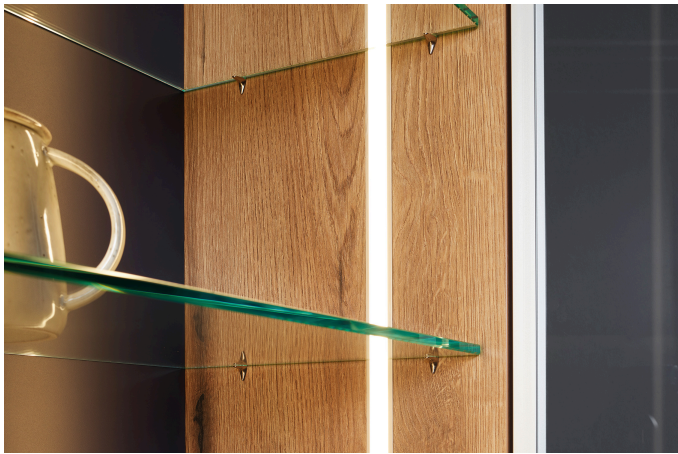


Milled profile I 24 mm

Reverse asymmetrical aluminium LED Milled Profile I 24mm 2,95m set of 5

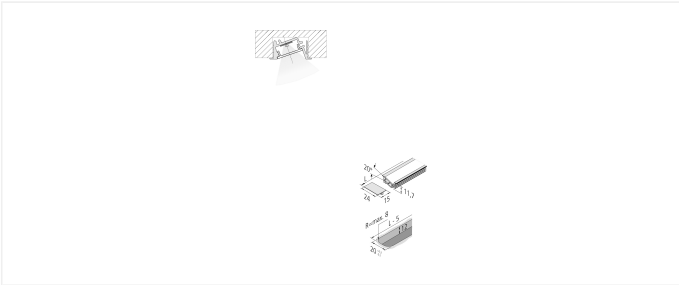


**Description:**  
LED milled profile I (reverse asymmetrical) 24 mm for integration of all Tape versions, assembly in 20 mm wide and 12 mm deep groove, optional accessory: front cover for covering the lateral milling radii and cover profile 15 mm

**EAN-No.:** 4051268195768

**Weight:** 2,85 kg

- Special features:**
- milled profile for reverse asymmetrical illumination



**Order number:**  
61500033268

article in stock

available versions

Choose from the options below. The currently selected one is highlighted in color.

article number	description	colour of housing
61500033213	LED Milled Profile I 24mm 1m	black
61500033263	LED Milled Profile I 24mm 2,95m set of 5	black
61500031063	Front cover LED Milled Profile I 24mm	black
61500033210	LED Milled Profile I 24mm 1m	anodized aluminium
61500033261	LED Milled Profile I 24mm 2,95m set of 5	anodized aluminium
61500031061	Front cover LED Milled Profile I 24mm	anodized aluminium
61500033218	LED Milled Profile I 24mm 1m	stainless steel
61500033268	LED Milled Profile I 24mm 2,95m set of 5	stainless steel
61500031068	Front cover LED Milled Profile I 24mm	stainless steel

