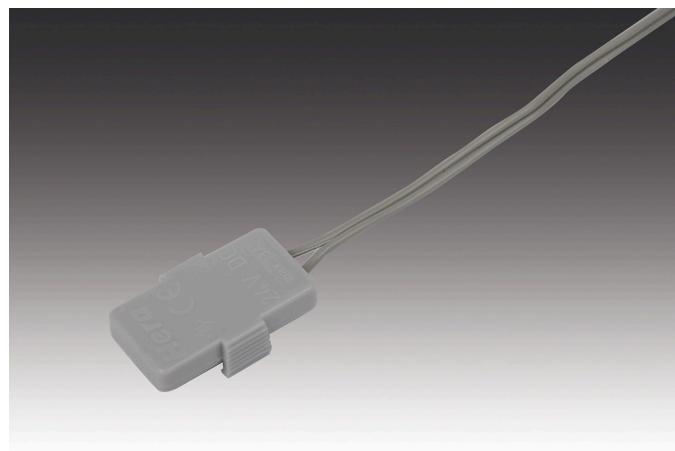


Flat-Track

24V power supply Flat-Track feeder element grey



Description:

LED power rail feeder element, incl. supply cable and ready to plug-in for Hera 24V transformers with 12-way distributor

Connection: LED-Trafo DC 24 V

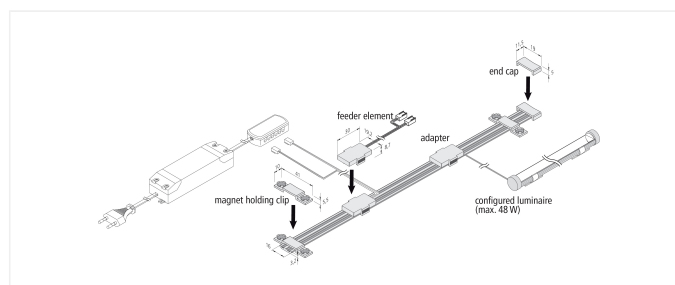
Symbols: CE, MM, IP20, SK III

EAN-No.: 4051268170697

Weight: 0,063 kg

Special features:

- for perfect and promotional illumination of shelves without disturbing and visible cables
- easy and time-saving installation without tools by magnet or adhesive fastening
- suitable for all common systems due to a minimal construction height of 3,2 - 3,5mm (max.)
- also ideal for mounting on metal, wooden, glass or mirror backwalls
- flexible and nearly invisible positioning of current collector
- Flat-track available in 2 standard lengths (1500 and 2600mm)
- cuttable to any length



Order number:
21803020102

limited availability

available versions

Choose from the options below. The currently selected one is highlighted in color.

article number	description	connection	colour of housing
21803010302	Flat-Track 1500mm grey	LED-Trafo DC 24 V	grey
21803010303	Flat-Track 1500mm black	LED-Trafo DC 24 V	black
21803010402	Flat-Track 2600mm grey	LED-Trafo DC 24 V	grey
21803010403	Flat-Track 2600mm black	LED-Trafo DC 24 V	black
21304119002	Flat-Track end cap grey	-	grey
21304119003	Flat-Track end cap black	-	black
21803040102	Flat-Track magnet holding clip grey	-	grey
21803040103	Flat-Track magnet holding clip black	-	black
21803020102	Flat-Track feeder element grey	LED-Trafo DC 24 V	grey
21803020103	Flat-Track feeder element black	LED-Trafo DC 24 V	black
21803010301	Flat-Track 1500mm white	LED-Trafo DC 24 V	white
21803010401	Flat-Track 2600mm white	LED-Trafo DC 24 V	white
21304119001	Flat-Track end cap white	-	white
21803040101	Flat-Track magnet holding clip white	-	white
21803020101	Flat-Track feeder element white	LED-Trafo DC 24 V	white

