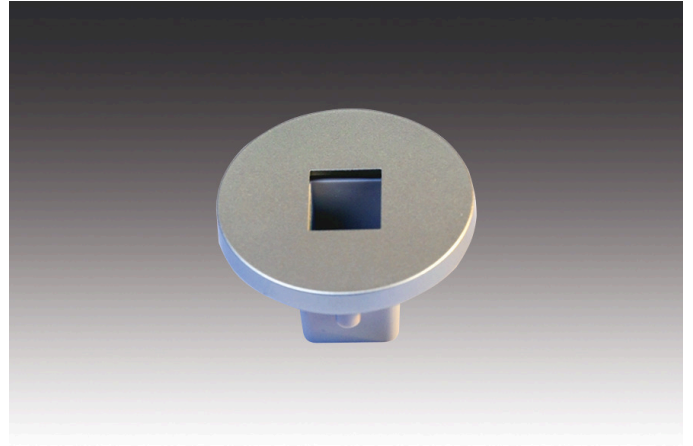




## LED-2-Link accessories

## Mounting Sleeve LED Mounting Profile anodized aluminium



**Description:**

mounting sleeve for upright assembly of mounting profile 15/13mm,  
necessary accessory: front cover for top covering and LED 24 connecting  
cable as connection for LED 2 Link Flood or Pixel

**Symbols:** UL

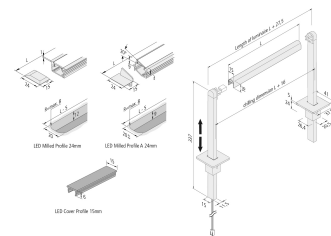
**EAN-No.:** 4051268164573

**Weight:** 0,013 kg

Drilling hole



28mm



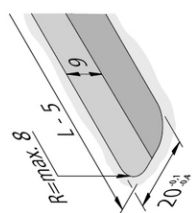
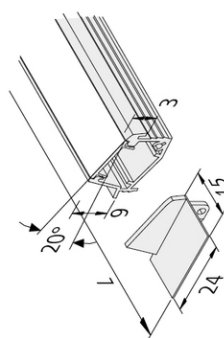
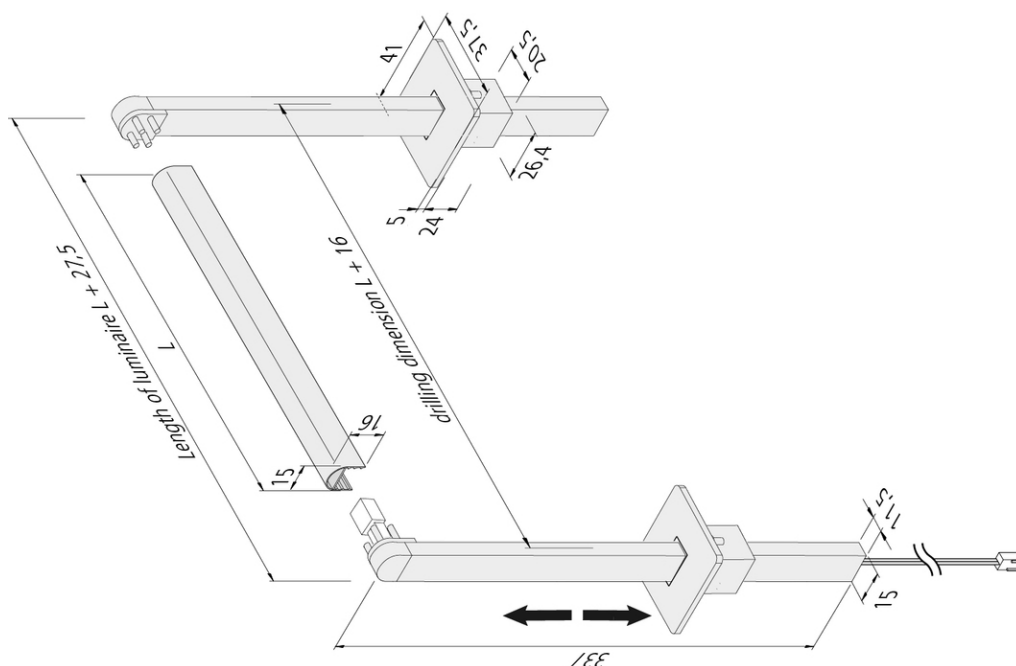
**Order number:**  
61500030007

limited availability

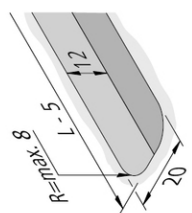
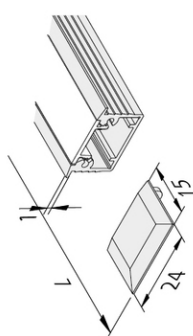
## available versions

Choose from the options below. The currently selected one is highlighted in color.

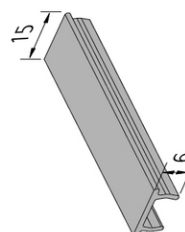
article number	description	colour of housing	metal housing	adjustable	type of construction	safety class	protection class
61500032703	LED-2-Link Showcase Profile 1m	black	Yes	Yes	linear luminaire	-	-
61500032763	LED-2-Link Showcase Profile 2,95m set of 5	black	Yes	Yes	linear luminaire	-	-
61500032701	LED-2-Link Showcase Profile 1m	anodized aluminium	Yes	Yes	linear luminaire	-	-
61500032761	LED-2-Link Showcase Profile 2,95m set of 5	anodized aluminium	Yes	Yes	linear luminaire	-	-
61500032913	LED-2-Link holding arm 300mm with supply cable 2,5m max. 48W	black	Yes	Yes	-	IP20	SK3
61500032903	LED-2-Link holding arm 300mm without supply cable	black	Yes	Yes	-	-	-
61500032911	LED-2-Link holding arm 300mm with supply cable 2,5m max. 48W	anodized aluminium	Yes	Yes	-	IP20	SK3
61500032901	LED-2-Link holding arm 300mm without supply cable	anodized aluminium	Yes	Yes	-	-	-
61500030003	Mounting Sleeve LED Mounting Profile black	black	Yes	No	-	-	-
61500030007	Mounting Sleeve LED Mounting Profile anodized aluminium	anodized aluminium	Yes	No	-	-	-
61500032813	LED Cover Profile 15mm 1m	-	No	No	-	-	-
61500032863	LED Cover Profile 15mm 2,95m set of 5	-	No	No	-	-	-
61500032810	LED Cover Profile 15mm 1m	-	No	No	-	-	-
61500032861	LED Cover Profile 15mm 2,95m set of 5	-	No	No	-	-	-



LED Milled Profile A 24mm



LED Milled Profile 24mm



LED Cover Profile 15mm